

## Accessing Student timetables (Years 7-12)

To access your timetable through [OneSchool](#), you will need to navigate to this webpage:

<https://oslp.eq.edu.au>

This is also available on the [School's website](#) under Support and resources > Student resources

<http://charterstowerssde.eq.edu.au>

m Extra-curricular Calendar and news Our community Support and resources

nt resources

Forms and documents

**Student resources**

Parent resources

Payments

Student services and support programs

### Student resources

#### Student timetables (Years 7-12)

To access your timetable, you will need to login to [OneSchool](#).

For step by step instructions, refer to Accessing Student Timetables.

#### APA Referencing Guide

The 'APA style' is an author-date style for citing and referencing information in assignments and publications.

For more information, refer to our [APA Referencing Guide \(0.7MB\)](#).

When you click on the link, you will be taken to the login page. Put in your school username and password (the same you use for Blackboard and emails).

Department of Education, Train X +

https://fed.education.qld.gov.au/as/2TPpY\_t8ytC/resume/as/authorization.ping

Queensland Government

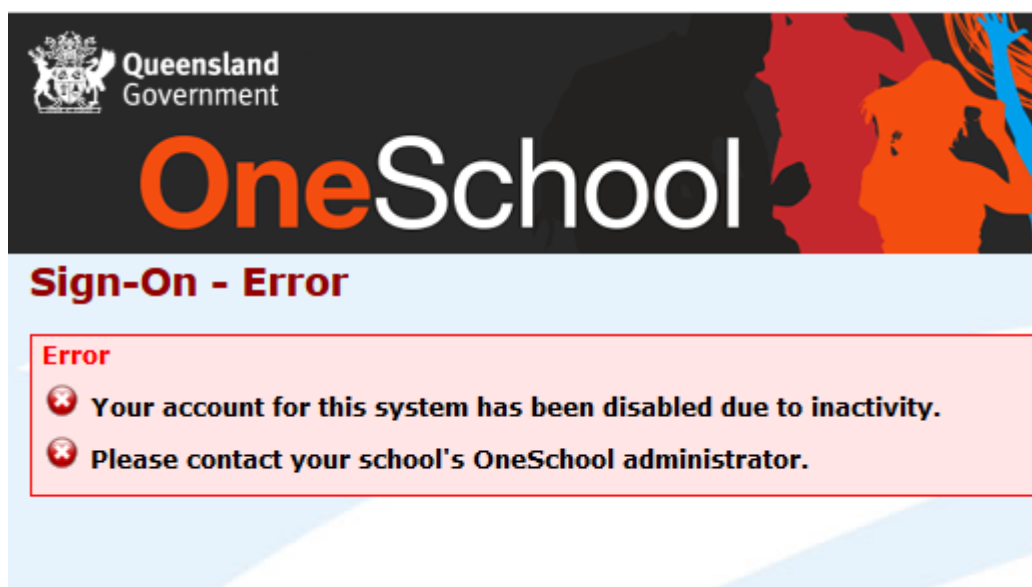
Logon ID

Password

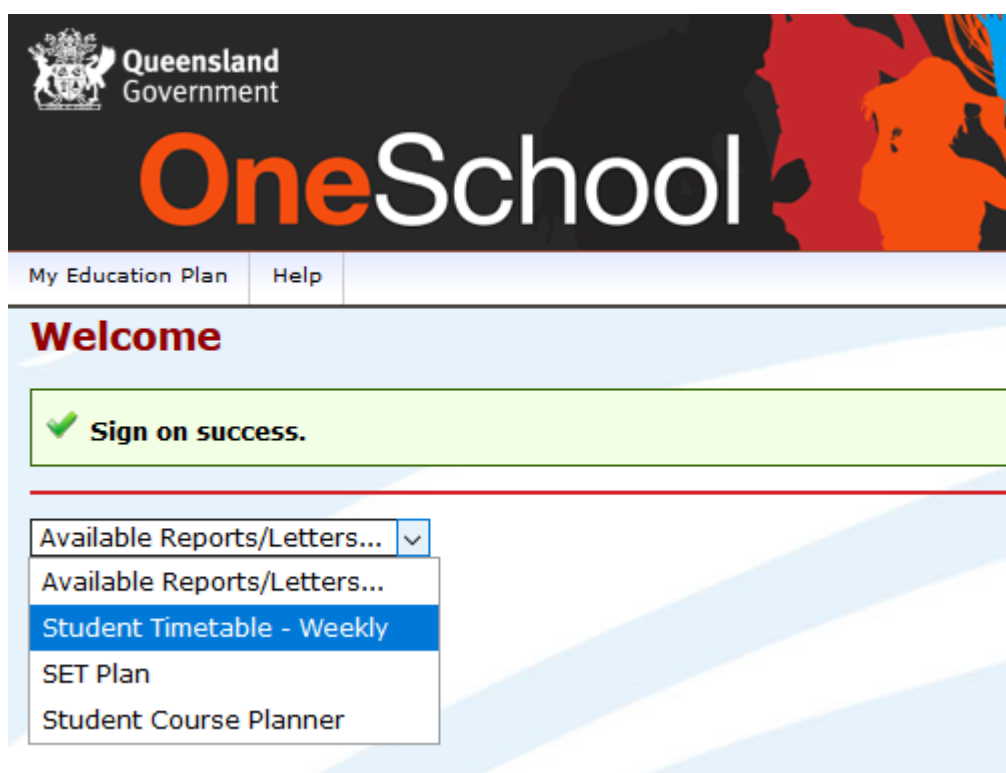
[Change my password](#)

Login

If you see the below message, please let your teacher know and the school will fix it.



Once successfully logged in, you will see this page. Please select Student Timetable from the drop down menu.



This will open another tab with your timetable displayed. You can save or print your timetable from here.