


## Clearing Cache

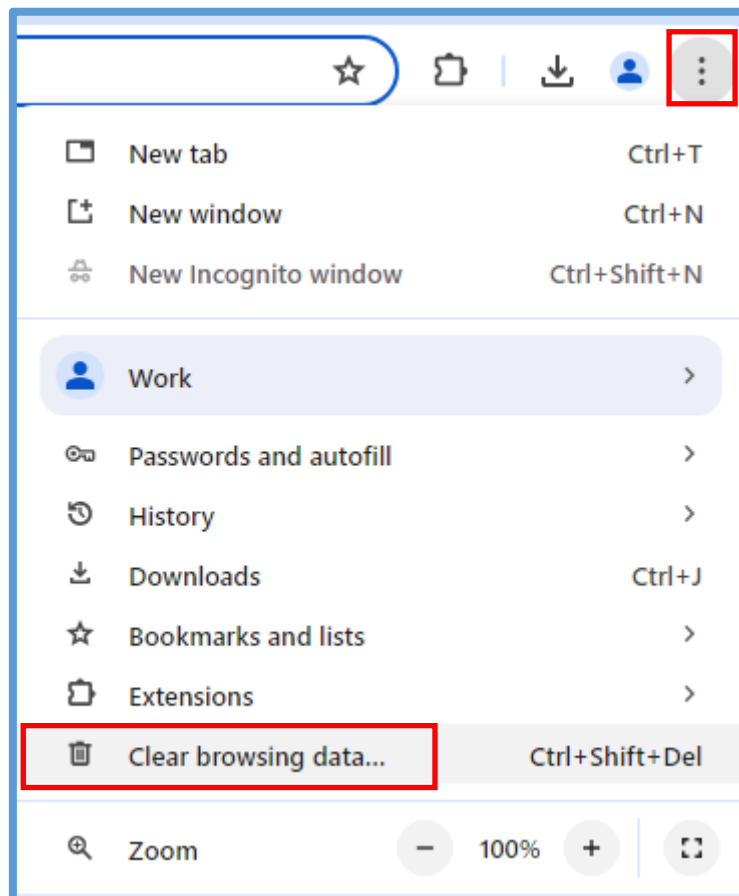
It is important to periodically clear the cache within your browsers to ensure websites load correctly with updated data and to prevent a host of authentication errors.

Please scroll through to see instructions for Chrome and Microsoft Edge.

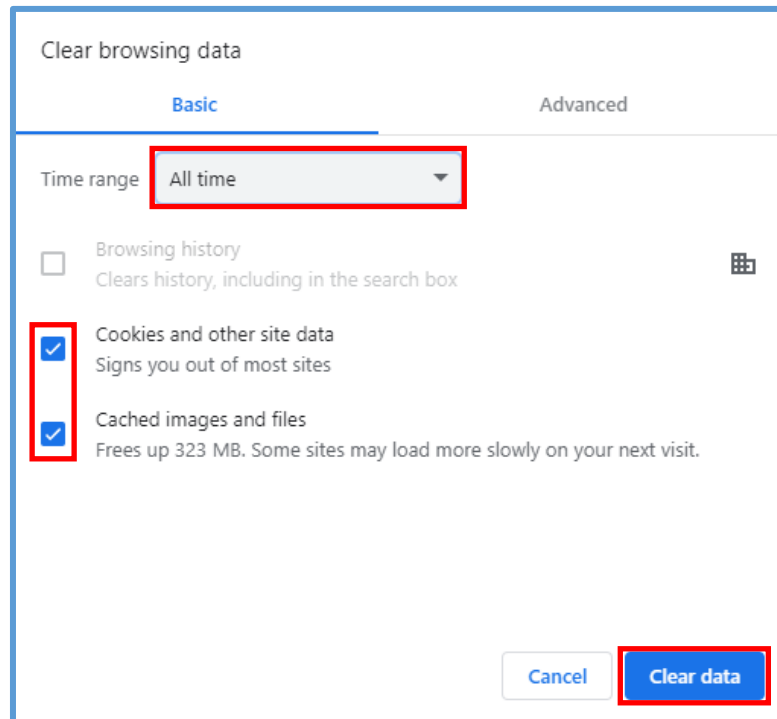
---

### Chrome

In Chrome, click the three dots  at the top right of the screen, then 'Clear browsing data...'



Ensure that the Time range is “All time” and that both ‘Cookies and other site data’ and ‘Cached images and files’ are ticked. Then select Clear data.



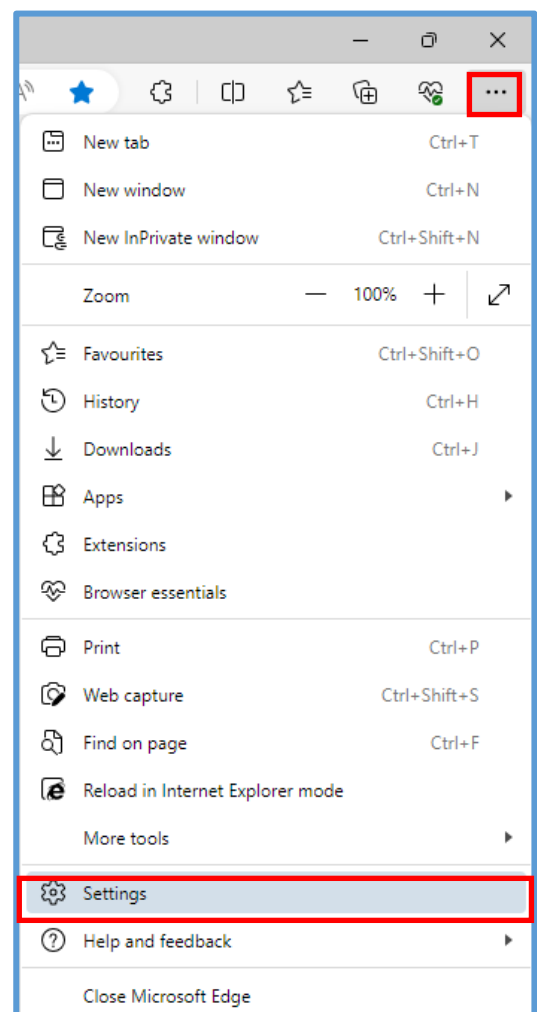
Restart your browser for this to take effect.

Microsoft



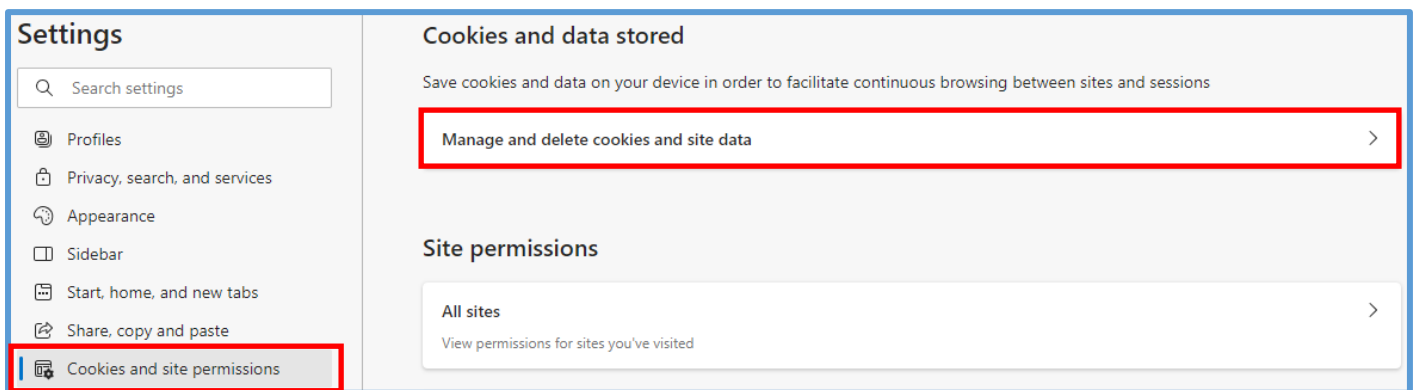
Edge

In Microsoft Edge, select the three dots at the top right of the screen, then select 'Settings'.

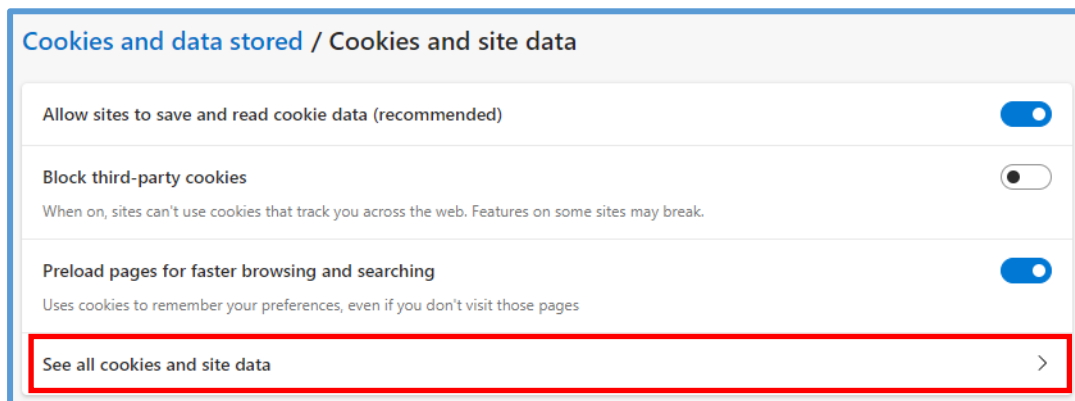


Click on 'Cookies and site permissions' under the settings heading on the left of the page.

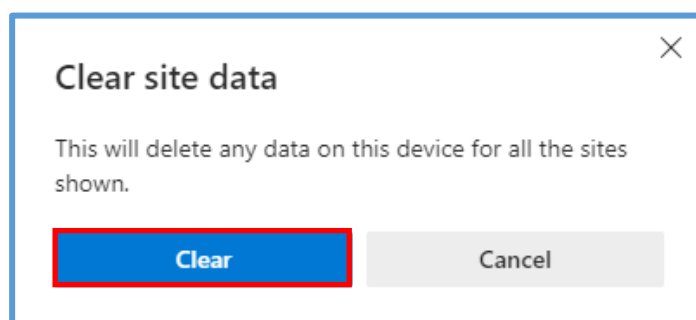
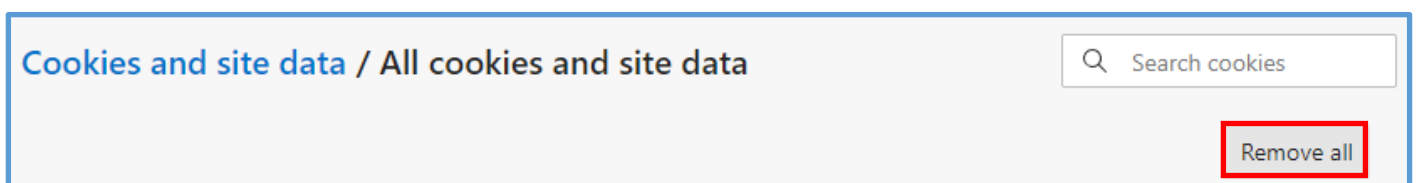
Select the 'Manage and delete cookies and site data' button.



Click the 'See all cookies and site data' button.



Click the 'Remove all' button and then the 'Clear' button.



Restart your browser for this to take effect.