

Completing and Accessing SET Plans - Year 10 students

To access and complete your SET Plan through [OneSchool](https://oslp.eq.edu.au), you will need to navigate to this webpage: <https://oslp.eq.edu.au>

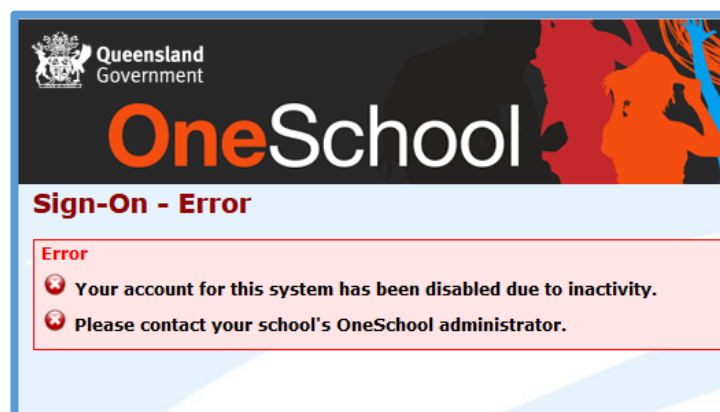
This is also available on the [School's website](https://charterstowersde.eq.edu.au/support-and-resources/i-t-support) under Support and resources > IT Support

<https://charterstowersde.eq.edu.au/support-and-resources/i-t-support>



When you click on the link, you will be taken to the login page. Put in your school username and password (the same you use for QLearn and emails), select the “I accept the conditions of use” tick box and then click Sign in.

Once you have logged in, if you see the below message contact either your teacher or the school and your account can be re-enabled.



Completing Your SET Plan

Notes:

- You will use OneSchool and you will be guided through a series of tabs that ask you to enter in information from your career goals to your subject selections for Year 11 and 12.
- Make sure you regularly click on the “save” button at the bottom of each screen.
- Ensure you have completed your SET Plan ready for the SET Plan Interviews.

First, you will need to complete the ‘My Intended Pathway’ section. This can be found by pressing the ‘My SET Plan’ tab at the top of the screen.



You will then be prompted to complete a series of questions:

1. The first question asks whether you intend to remain in school after the end of Year 10.

If you intend to go to work after Year 10 or study at TAFE full time, the QLD government regulations require you to be earning or Learning at the rate of minimum 25 hours per week. The school must have confirmation of this before your enrolment can be finalised.

2. The second question – you must tick Queensland Certificate of Education (definition below) unless you are participating in an alternate special education progression. This would only apply to students who are in Roll Class Q. You must also have an interview with the Deputy Principal Special Education to confirm this pathway.

3. Question 3 asks you to identify whether you will be gaining QCE points through any other option other than General or Applied Subjects.

- If you are wanting to achieve an ATAR and use this to go straight to university after high school, then click ATAR.
- If you are interested in completing a Vocational Education and Training E=(predominantly thought of as TAFE courses) while you are at school either through the CTSDE options or external options, list these here with the researched provider and course name.
- If you are wanting to complete an advance University subject while still at school to help you get into university – select University subject

4. Choose the option that you are wanting to pursue after school.

5. You need to have created a USI. You should have already provided this to your Vocation Education and Training teacher when completing Certificate II Skills for Work and Vocational Pathways.

If you have not created a USI follow this link: <https://www.usi.gov.au/students/get-a-usi>

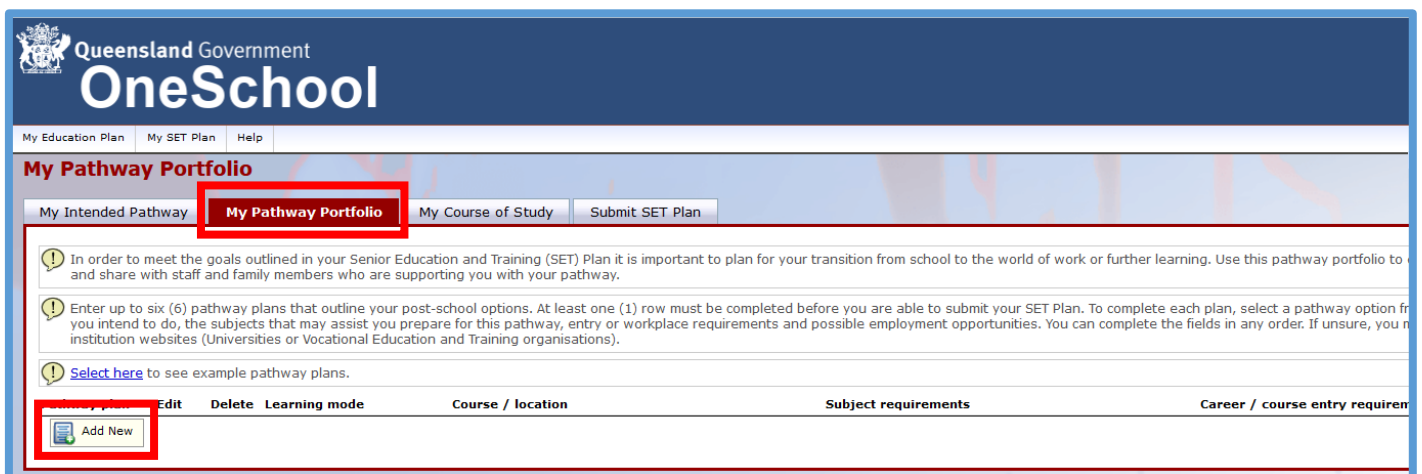
You will keep this USI for the rest of your life – so when you have created it – keep it somewhere safe.

Once you have completed these questions, press ‘Save’ at the bottom of your screen.



Then, click on ‘My Pathway Portfolio’ at the top of this section.

In this section you must identify at least two (2) Pathways that you would like to follow after school. This can include work, further study, University, apprenticeships. To enter pathways into this section, press ‘Add New’.



To complete the Pathway, you must first select a **Learning Mode**

If your pathway includes a course – then you list it under **Course/Location**.

Research what courses you need to achieve your pathway especially if you want to go to university as there may be specific subjects that you need to complete in Year 11/12 as Pre-Requisite subjects for your particular course

Subject Requirements: Are there specific requirements that you need to complete for your pathway? Most employers are wanting students to have their Queensland Certificate of Education (QCE), others require at least a pass in Year 10 English and Mathematics (Defense Force, many apprenticeships)

Career / Course Entry Requirements: What do you need to do to move forward in this pathway? If you are wanting to go to work, you will need a resume, your report cards, and Certificates you have completed in Year 10.

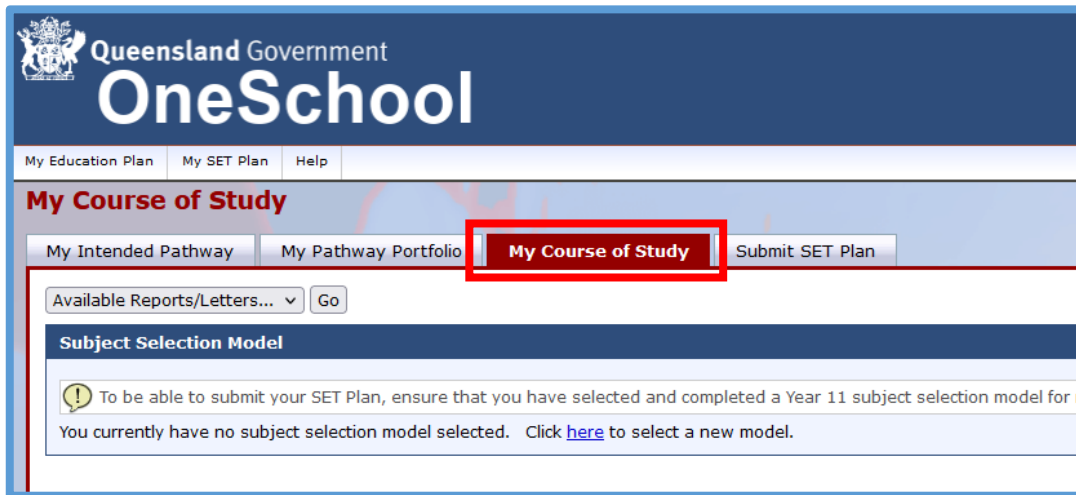
If you want to be a Nurse and go to university you may need a specific ATAR. You can find out what ATAR you need by accessing the QTAC site for these predictions and downloading the Year 10 Guide for 2025

<https://www.qtac.edu.au/year-10-students/>

Future Employment Possibilities: What is it that you can do with the course or degree that you will complete? This is the end-game – What are you wanting to do in the future?

Once you have completed these fields, press 'Save'.

Then click on the third tab 'Course of Study'.



This section will only become available after the Senior Subject Selection Sessions in Week 4 and on Monday of Week 5.

This will show the subjects that are on offer next year at CTSDE.

The subjects will be set out in their "Lines" which means that each subject on that line has their lessons at the same time, therefore you can only pick one on each "Line". You will see that subjects other than Mathematics and English may be offered on multiple lines to try and fit student preferences.

There will also be a subject on some lines that is called 'External Subject'. If you have a School Based Apprenticeship, or you are enrolling in an external VET subject, you will select this option on one line. You may also choose this subject if you are completing a Certificate II Course at CTSDE as this counts for 2 subjects.

You will need to select 6 subjects. All students start Year 11 on a full-time load of 6 subjects. Make sure that you choose subjects that reflect your pathway.

If you are wanting to pursue an ATAR pathway you must pick at least 4 General Subjects.

You need to consider the following when choosing your subjects:

- Any pre-requisites that you may require for a university course you intend to apply for.
- Your likelihood of success in each subject
- Your overall expected workload and how you will balance other activities (part-time work, a TAFE course, social activities)
- You should also remember that success in a subject is about the work put in and therefore you should pick subjects that you are capable of and enjoy.

You have now completed your SET Plan!

But remember your SET Plan is a living document and throughout Year 11 and 12 you need to keep it up to date with:

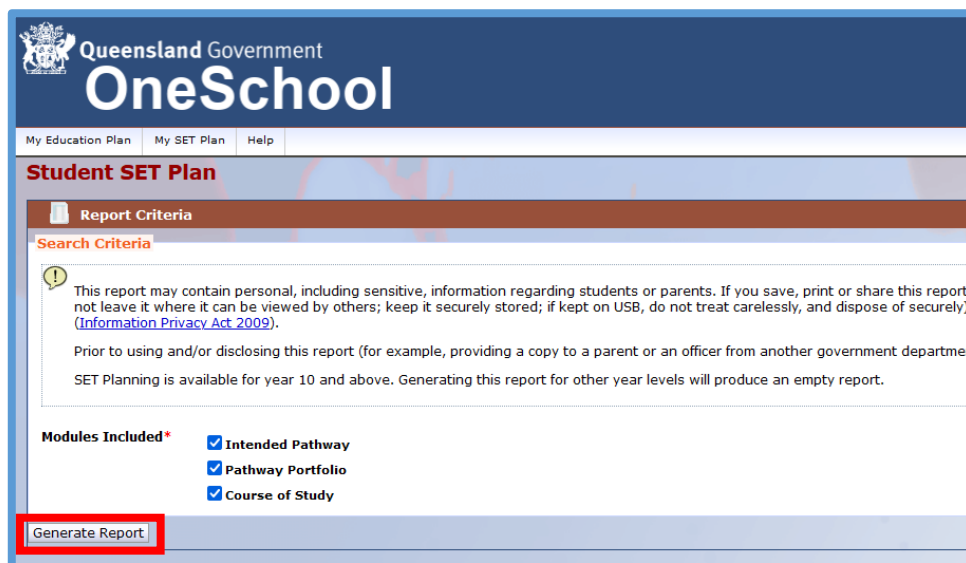
- subject changes
- changes in career goals
- apprenticeships / traineeships / TAFE courses you start
- strategies for academic improvement (strategies tab)
- discussions you have with the guidance officer (monitoring and review tab)

Viewing your SET Plan

To view your SET Plan, press on the 'OneSchool' header at the top of the page. Then use the drop-down menu to select Student SET Plan, then press 'Go'.



This will open another tab where you can generate your SET Plan by pressing 'Generate Report'.



Your SET Plan will open in a new tab where it can saved/downloaded.