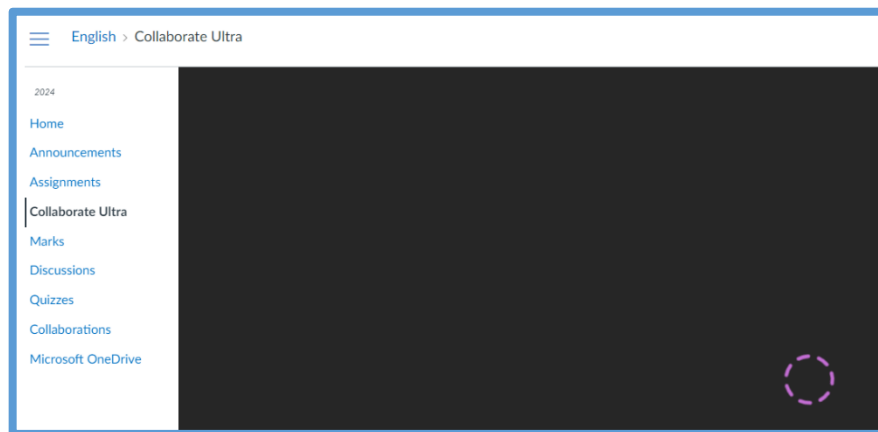


Qlearn Lesson Scheduler

You may encounter a spinning purple circle when trying to access your lesson scheduler:

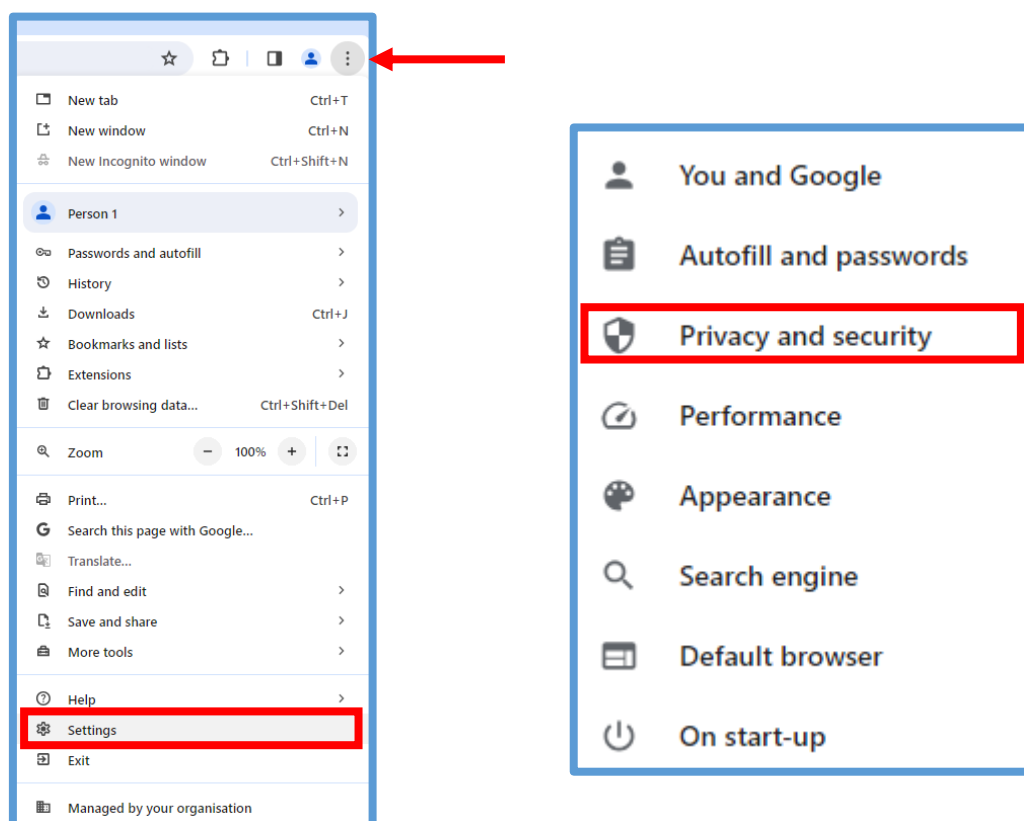


You will need to enable third-party cookies. Refer to the preferred browsers below for steps on how to do this: **Chrome, Microsoft Edge, Safari.**

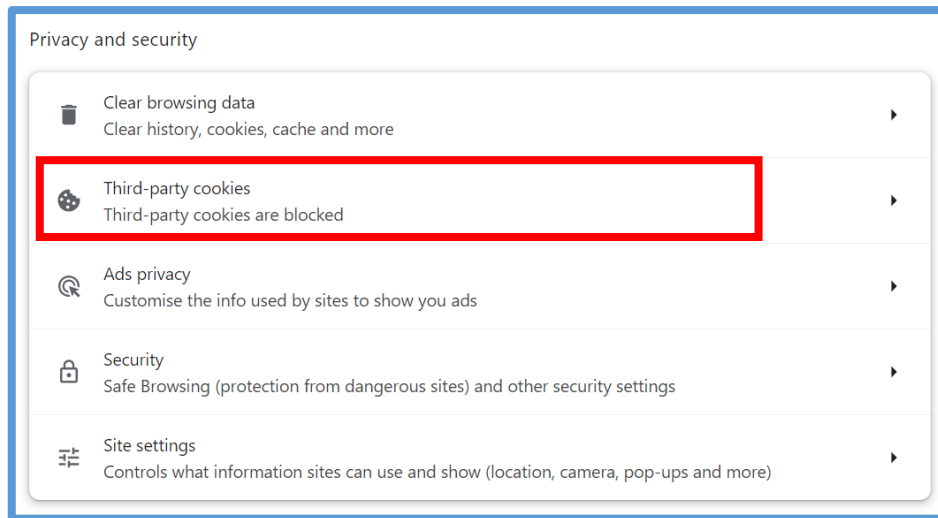


Chrome:

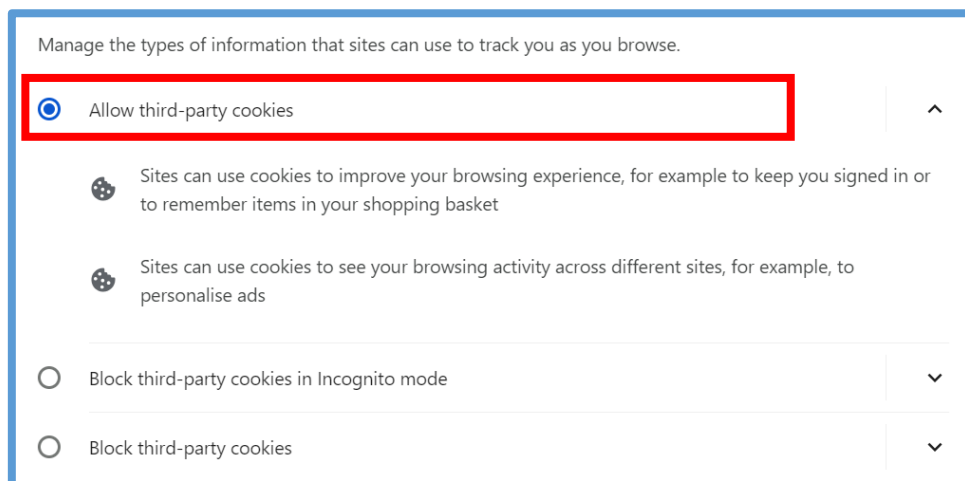
Go to settings, then 'Privacy and Security':



Select 'Third-party cookies'



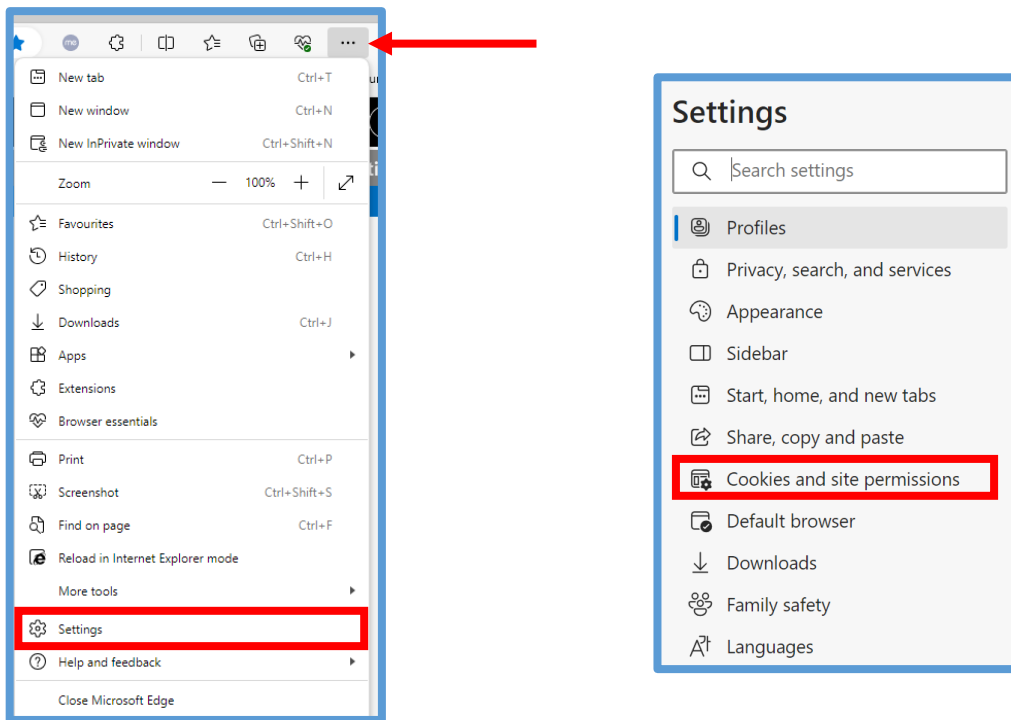
Select 'Allow third-party cookies'



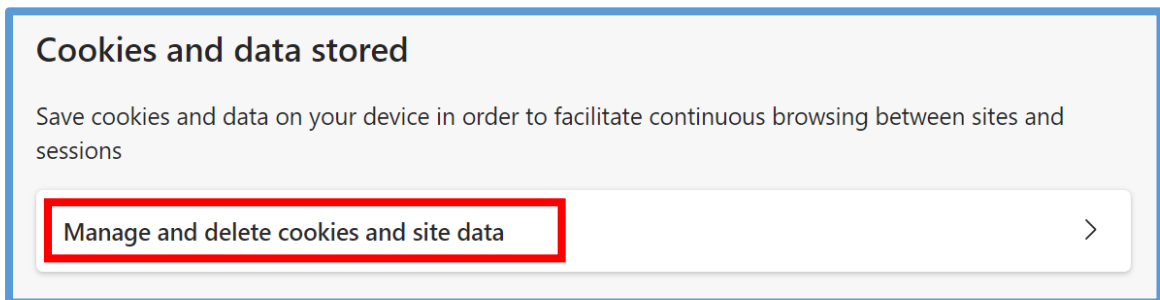
Restart your browser for this change to take effect.



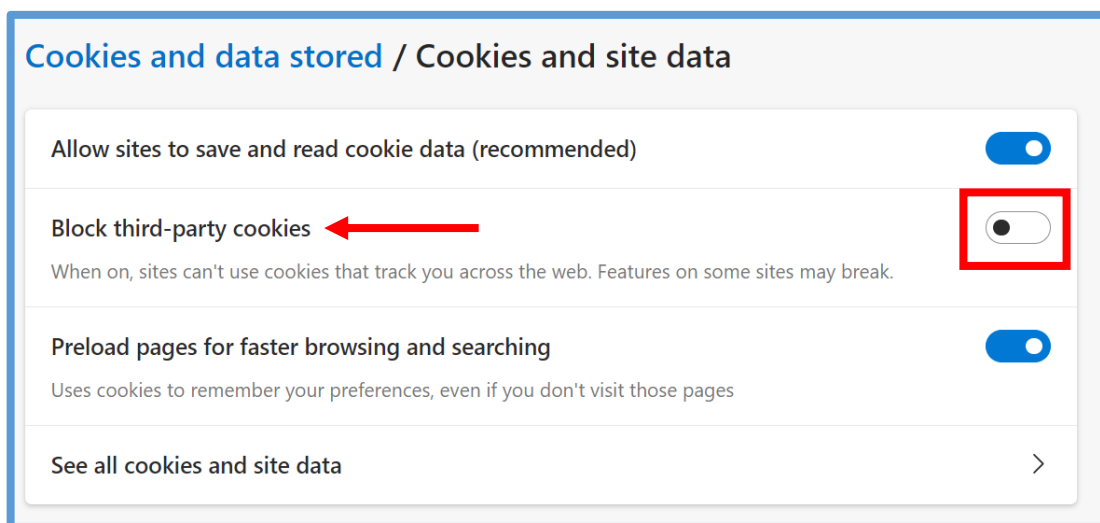
Go to settings, then 'Cookies and site permissions'



Select 'Manage and delete cookies and site data'



Unselect 'Block third-party cookies'

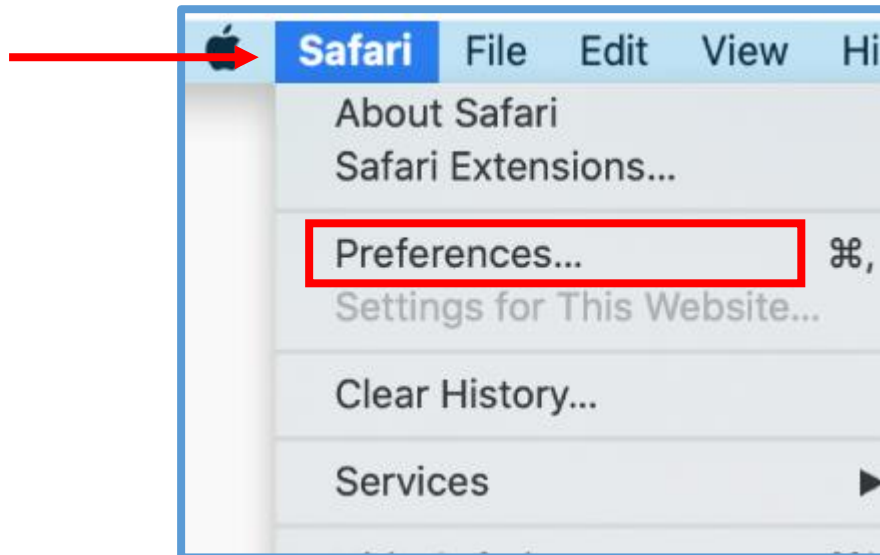


Restart your browser for this change to take effect.

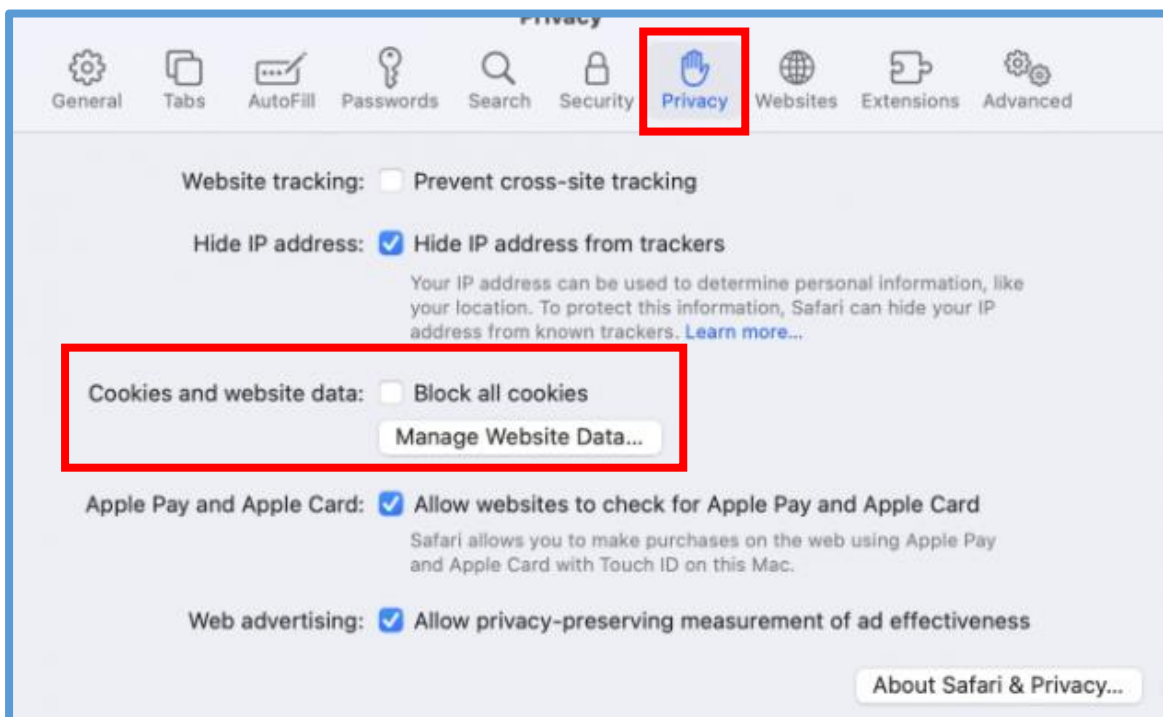
Safari

Launch the Safari browser.

Click 'Safari', which is next to the Apple icon at the top left of your screen. A dropdown menu will appear, then press 'Preferences'.



Click the 'privacy' tab, which is in the top panel. Navigate to 'Cookies and Website Data' and un-tick the option 'Block all cookies'.



Restart your browser for this change to take effect.